

Child Protection and Safeguarding Policy

Policy Review

The responsibility of reviewing and maintaining this policy is Craig Dembicki (Managing Director). This policy will be reviewed annually.

Start date of policy: **19th February 2015**

Updated: **26th June 2024**

Date of next review: **1st September 2025**



Craig Dembicki
Managing Director
Education 1st

This has been written to ensure compliance with "Keeping children safe in education" (1st September 2024) and "Working Together to Safeguard Children" (March 2018)

Education 1st fully recognises its statutory and moral responsibilities to protect and safeguard the welfare of the children and young people in our care. "The welfare of the child is paramount" Children's Act 1989.

1. Definitions

Safeguarding is defined as: protecting children from maltreatment; preventing impairment of children's health or development; ensuring that children grow up in circumstances consistent with the provision of safe and effective care; and taking action to enable all children to have the best outcomes - Keeping Children Safe in Education (KCSIE 2024).

Child Protection refers to the situation where a child is suffering significant harm, or is likely to do so, and action is required to protect that child.

2. Introduction

At Education 1st safeguarding and promoting the welfare of children is everyone's responsibility. Everyone who comes into contact with children and their families has a role to play in safeguarding children, in identifying concerns, sharing information appropriately and taking prompt action. In order to fulfil this responsibility effectively, all professionals should make sure their approach is child centred. This means that they should consider, at all times, what is in the best interests of the child.

Education 1st is committed to safeguarding and promoting the welfare of children by:

- The provision of a safe environment in which children and young people can learn.
- Fulfilling our statutory (legal) responsibilities to identify children who may be in need of extra help or who are suffering, or are likely to suffer, significant harm.

All action taken by Education 1st will be in accordance with:

Current legislation:

- The Children Act 1989 and 2004
- The Education Act 2002 and 2011
- The Education and Inspection Act 2006

Statutory guidance:

- **Working Together to Safeguard Children (2018)**, which sets out the multi-agency working arrangements to safeguard and promote the welfare of children and young people and protect them from harm; in addition it sets out the statutory roles and responsibilities of schools.
- **Keeping Children Safe in Education (2024)** is statutory guidance issued by the Department for Education which all schools and colleges must have regard to when carrying out their duties to safeguard and promote the welfare of children.
- **The Teacher Standards (2012)** state that teachers should safeguard children's wellbeing and maintain public trust in the teaching profession as part of their professional duties.

Non-statutory guidance:

- **What to do if you are worried child is being abused – advice for practitioners (March 2015)**

Key documentation, procedures and guidelines for this Policy are detailed in Appendix A

All staff at **Education 1st** have a role and responsibility to safeguard children and young people attending our provision, irrespective of their role by:

- Identifying concerns early and providing help for children and young people, to prevent concerns from escalating to a point where intervention would be needed via a statutory assessment under the Children Act 1989. These concerns should be discussed with the provision's Designated Safeguarding Lead (DSL).
- All staff should be aware of the process and principles for sharing information within the provision.
- The most important consideration is whether sharing information is likely to safeguard and protect a child.
- **Any staff member** who has a concern about a child's welfare **should follow the referral processes set out in Appendix B**

Related Policies:

- Recruitment and Selection Policy
- Acceptable use Policy
- Anti-Bullying Policy
- Behaviour Policy
- E-Safety Policy
- Exclusions Policy
- Children in Care Policy

- Attendance Policy
- Confidentiality Policy
- Data Protection Policy
- Device, Google Drive and BYOD Policy
- Drugs and Alcohol Awareness Policy
- Equality and Diversity Policy
- Health and Safety Policy
- SEND and Inclusion Policy
- Lone Working Policy
- Positive Handling Policy
- Supporting students with medical conditions Policy
- Trips and Visits Policy

3. Overall Aims

This policy will contribute to the safeguarding of students at Education 1st by:

- Contributing to the establishment of a safe, resilient and robust safeguarding ethos built on mutual respect, and shared values;
- Teaching students about safeguarding, including online, through teaching and learning opportunities, as part of a broad and balanced curriculum
- Alerting staff to the signs and indicators of safeguarding issues;
- Developing staff awareness of the causes and signs of abuse;
- Developing staff awareness of the risks and vulnerabilities their students face by addressing concerns at the earliest possible stage;
- Reducing the potential risks students face of being exposed to violence, extremism, exploitation or victimisation;
- Working in partnership with students, parents/carers and agencies.

This policy will contribute to supporting the students at Education 1st by:

- Identifying and protecting the most vulnerable;
- Identifying individual needs where possible;
- Designing plans to meet those needs.

4. Expectations

All staff will:

- Be familiar with this safeguarding policy;
- Be subject to Safer Recruitment processes and check;
- Be involved, where appropriate, in the implementation of individual education programmes, integrated support plans, child in need plans and inter-agency child protection plans;
- Be alert to signs and indicators of possible abuse;
- Contact the DSL/Deputy, receive a reply from the DSL/Deputy, and record concerns on Education 1st reporting concerns form.

If a child is in immediate danger or is at risk of harm a referral should be made to children's social care and/or the police immediately. Anyone can make a referral. Where referrals are not made by the DSL, they should be informed, as soon as possible, that a referral has been made.

All Visitors will:

- Read the 'Child Protection Reporting Procedure' and have a visitors badge with important safeguarding information on it whilst at Education 1st.

5. Training

In addition to this policy, **all** staff should read and understand Part One of **Keeping Children Safe in Education (KCSIE) (September 2024)**.

- **All** staff members will receive appropriate safeguarding and child protection training which is regularly updated. This training will be delivered by the Bristol Safeguarding in Education Team where necessary and appropriate and, where not delivered directly, training will be quality assured against guidelines provided by the Bristol Safeguarding in Education Team.
- In addition, **all** staff will receive safeguarding and child protection updates (for example, via email, e-bulletins and staff meetings), as required, but at least annually, to provide them with relevant skills and knowledge to safeguard children effectively.

- Whistle blowing procedures will be covered in whole provision training, so that staff know what to do if they have concerns relating to safeguarding practice within Education 1st.
- The Designated Safeguarding Lead and any deputies will undergo statutory training, delivered by the Bristol Safeguarding in Education Team and compliant with Keeping Children Safe in Education, to provide them with the knowledge and skills required to carry out the role. The training will be updated in line with published guidance.
- The proprietor will ensure that all staff members undergo safeguarding and child protection training at induction. The training will be regularly updated. Induction and training will be in line with advice from the Bristol Safeguarding in Education Team.
- Education 1st ensures that at least one person on any appointment panel will have undertaken safer recruitment training, in line School Staffing (England) Regulations 2009 and as outlined in Keeping Children Safe in Education (Part 3).
- The DSL will undertake Prevent awareness training and in turn will provide advice and support to staff on protecting children from the risk of radicalisation.
- Online safety training for staff will be integrated, aligned and considered as part of the overarching safeguarding approach.

6. Role of the Designated Safeguarding Lead (DSL)

The Designated Safeguarding Lead (DSL) is a senior member of staff, who undertakes lead responsibility for safeguarding and child protection within the school. Details of our DSL and Deputy DSL are available on the Education 1st website.

Whilst the activities of the DSL can be delegated to appropriately trained deputies, the ultimate **lead responsibility** for safeguarding child protection remains with the DSL.

The broad areas of responsibility for the DSL are:

- **Managing referrals** to other agencies including, the local authority children's social care in cases of suspected abuse; the Channel Programme where there is a radicalisation concern; the Disclosure and Barring Service in cases where a person is dismissed or left due to risk/harm to a child and the Police in cases where a crime may have been committed in relation to safeguarding. The DSL will also support and advise other staff in making referrals to other agencies.
- **Agreeing with the commissioning school/PRU** who will seek agreement of the parents for a referral unless to do so would place the young person at increased risk of harm. Lack of agreement would not stop a referral from going ahead.
- **Working with others** to fulfil statutory responsibilities in relation to children and young people subject to a child protection plan by attending child protection conferences and implementing the multi-agency child protection plan; and liaise with the Local Authority Designated Officer (LADO) where there are concerns about the conduct or an allegation is made against a member of staff or volunteer at the school (N.B. if there is an allegation against the Director of Learning then the proprietor will liaise with the LADO).
- **Undertaking and Managing Training** - to ensure the DSL (and any deputies) will undergo training (updated every 2 years) to provide them with the knowledge and skills required to carry out the role. Ensuring all staff receive CP awareness training including CSE, Prevent and FGM as part of their induction and on a minimum of an annual cycle thereafter. Ensuring all training records are accurate and up to date.
- **Raising Awareness** to ensure Education 1st's Child Protection and Safeguarding policy is known, understood and used appropriately. The DSL will also provide an annual report to the proprietor on safeguarding and child protection activity within the setting.
- **Managing safeguarding information** through the collection, monitoring, reviewing, safe storage and transfer of safeguarding and child protection files in line with Bristol Safeguarding in Education Team guidance. Ensure information is communicated to the

Designated Safeguarding Lead of the commissioning school/PRU.

- **Ensuring safer recruitment practices are always followed.** At least one member of every recruitment panel has Safer Recruitment Training in line with guidance in part 3 of Keeping Children Safe in Education.

The following checks are completed before a person takes up post;

- identity check,
- academic qualification check,
- professional and character reference checks,
- any gaps in previous employment history,
- health check,
- eligibility to work in the UK,
- appropriate checks through the Disclosure and Barring Service (DBS).

Successful applicants must show their original DBS certificate to Education 1st before they take up the post and where an applicant does not have subscription to the DBS update service, a new DBS check will be completed for them.

- **Maintaining an accurate Single Central Record (SCR)** that is live and on-going. The SCR is available to commissioning schools/PRUs, as well as to the local authority.
- **Availability** of the DSL (or a deputy) during term time and school hours needs to be ensured for staff to discuss any safeguarding concerns. Co-operate as required with relevant agencies, DSLs of commissioning bodies and attend case conferences where needed.

A more detailed description of the role of the DSL is explained in Keeping Children Safe in Education (2024).

7. The Proprietor

The proprietor will ensure that:

- The provision has a safeguarding policy in accordance with the procedures of Bristol Safeguarding in Education Team;
- The provision operates, “safer recruitment” procedures and ensures that appropriate checks are carried out on all new staff and relevant volunteers;
- A member of the provision’s senior leadership team is appointed as the DSL;
- The DSL attends appropriate refresher training every two years;
- The Directors and all other staff who work with children undertake regular safeguarding training;
- Temporary staff and volunteers are made aware of the school’s arrangements for safeguarding and child protection and their responsibilities;
- The provision remedies any deficiencies or weaknesses brought to its attention without delay;
- The provision has procedures for dealing with allegations of abuse against staff/volunteers;
- The proprietor reviews its policies/procedures annually;
- The Proprietor is nominated to be responsible for liaising with the local authority and other partner agencies in the event of allegations of abuse being made against the DSL.

8. Creating a Culture of Safeguarding

- **Safer Recruitment and Selection**

The provision pays full regard to the safer recruitment practices detailed in ‘Keeping Children Safe in Education’ (2024).

- **Staff Support**

It is recognised the stressful and traumatic nature of safeguarding and child protection work. Education 1st will support staff by providing an opportunity to talk through their anxieties with the DSL and to seek further support as appropriate.

- **Student Support**

Opportunities will be provided for students to develop skills, concepts, attitudes and knowledge that promote their safety and wellbeing. Relevant issues will be supported

through the curriculum, specifically in PSHE to explore key areas such as self-esteem, emotional literacy, assertiveness, power, sex and relationship education, e-safety and bullying.

- **Whole Setting Approach**

All policies which address issues of power and potential harm, for example anti bullying, equal opportunities, handling, positive behaviour are linked to ensure a whole setting approach.

The safeguarding policy cannot be separated from the general ethos of Education 1st, which ensures that students are treated with respect and dignity, taught to treat each other with respect, feel safe, have a voice, and are listened to.

Staff members working with children are advised to maintain an attitude of **'it could happen here'** where safeguarding is concerned. When concerned about the welfare of a child, staff members should always act in the **best** interests of the child.

9. What Staff Need to Know

Key Changes to 'Keeping Children Safe in Education' through 2023 – 2024 (from 1st September 2024);

The **'Definition'** of 'safeguarding and promoting the welfare of children' has been updated to reflect the changes made in Working together to safeguard children (DfE, 2023a). The definition now includes the additional points of:

- Providing help and support to meet the needs of children as soon as problems emerge;
- Protecting children from maltreatment, inside or outside the home, including online.

The guidance on **'Early Help'** has also been amended in line with Working together. The update adds that professionals should be alert to the need for early help for a child who:

- Is frequently missing/goes missing from education, home or care;
- Has experienced multiple suspensions, is at risk of being permanently excluded from schools, colleges and in alternative provision or a pupil referral unit;
- Has a parent or carer in custody or is affected by parental offending.

Abuse, neglect and exploitation

Where applicable, 'abuse and neglect' has been changed throughout the document to 'abuse, neglect and **exploitation**.' The definition of 'abuse' has also been changed to clarify that harm can include children witnessing the ill-treatment of others and that this is particularly relevant when children **see, hear or experience** domestic abuse and its effects.

Children absent from education

In outlining the signs that children may be at risk of harm, the guidance updates 'deliberately missing education' to read 'unexplainable and/or persistent absences from education.'

Data Protection

The updated guidance recommends that education professionals read the [DfE Data Protection guidance for schools](#) (DfE, 2024b). This guidance is aimed at school staff, governors and trustees and sets out how to: comply with data protection law; develop data policies; understand what staff and pupil data to keep; and prevent personal data breaches.

Alternative Provision

The updated guidance clarifies that when a school places a pupil with an alternative provision provider, the school continues to be responsible for the safeguarding of that pupil.

Children who are lesbian, gay, bisexual or gender questioning

The 'Children who are lesbian, gay, bisexual, or gender questioning' section is currently under review pending the outcome of the [gender questioning children guidance consultation](#) (DfE, 2023b).

Children and the Court System

The updated guidance now directs schools to two guides that support children in the court system, one for [5 to 11 year-olds](#) (HM Courts and Tribunals Service, 2017a) and the other for [12 to 17 year olds](#) (HM Courts and Tribunals Service, 2017b).

Holding and Sharing Information

The updated guidance highlights that, as well as keeping records of concerns, discussions and decisions, designated safeguarding leads should keep record of the rationale for any decisions made.

Key Changes to 'Keeping Children Safe in Education' through 2022 – 2023 (from 1st September 2023);

- Clarification that being absent, as well as missing, from education can be a warning sign of a range of Safeguarding concerns, including sexual abuse, sexual exploitation or child criminal exploitation. (2023)
- Additional information pertaining to the fact that online pre-recruitment checks for staff will form part of safer recruitment processes. (2023)
- Additional information/ guidance on managing incidents of child-on-child sexual abuse allegations. (2022)
- More information for DSLs/ Leaders on managing low level concerns.

Staff Responsibilities

All staff need to be aware of the systems within Education 1st which support safeguarding and child protection – this forms part of the induction process but also on-going training which is regularly updated. All staff should:

- Know the DSL and any deputies and how to contact them;
- Understand their role;
- Know the proprietor is responsible for safeguarding;
- Read and understand this policy and revisit it annually/or when significantly amended;
- Read Part 1 of Keeping Children Safe in Education (2024);
- Attend regular safeguarding training;
- Be aware of Education 1st's procedures in order to identify those students in need of early intervention/help and take appropriate action where there are concerns for the welfare and protection of children and young people;
- Adhere to the Education 1st Behaviour Policy;
- Know what to do if a child tells them he/she is being abused, neglected or **exploited**; Staff should know how to manage the requirement to maintain an appropriate level of confidentiality whilst at the same time liaising with relevant professionals such as the designated safeguarding lead and children's social care. Staff should never promise a child that they will not tell anyone about an allegation- as this may ultimately not be in the best interests of the child;
- Report concerns about a child/young person immediately or as soon as it is practicable to the DSL; however, if a child is in immediate danger or is at risk of harm a referral should be made to children's social care or the police immediately;
- Be aware of signs of child abuse, neglect and **exploitation**;
- Be aware of **whistleblowing procedures** to the senior leadership team if they have concerns about safeguarding practices within the provision. Where a staff member feels unable to raise an issue with the senior leadership team or feels that their genuine concerns are not being addressed, other whistleblowing channels may be open to them:
 - The NSPCC whistleblowing helpline is available for staff who do not feel able to raise concerns regarding child protection failures internally. Staff can call: 0808 800 5000– line is available from 8:00 AM to 8:00 PM, Monday to Friday and 9.00am – 6.00pm at the weekend. Email: help@NSPCC.org.uk
- Staff **must** personally report to the police cases where they discover that an act of FGM appears to have been carried out. Staff must liaise with the DSL following this.
- Report their concerns to the DSL if they think a student may be at risk of radicalisation or involvement in terrorism.
- Report any potential safeguarding concerns about an individual's behaviour towards

children and young people immediately. Allegations or concerns about colleagues and visitors must be reported directly to the DSL. If the concern relates to the Operations Manager/DSL/Education Lead it should be reported to the proprietor/Managing Director, who will liaise with the Local Authority Designated Officer (LADO) and they will decide on any action required.

10. Key Safeguarding Areas

Child Sexual Exploitation (CSE) and Trafficking involves exploitative situations, contexts and relationships where young people receive something (for example food, accommodation, drugs, alcohol, gifts, money or in some cases simply affection) as a result of engaging in sexual activities. Sexual exploitation can take many forms ranging from the seemingly 'consensual' relationship where sex is exchanged for affection or gifts, to serious organised crime by gangs and groups. What marks out exploitation is an imbalance of power in the relationship. The perpetrator always holds some kind of power over the victim which increases as the exploitative relationship develops. Sexual exploitation involves varying degrees of coercion, intimidation or enticement, including unwanted pressure from peers to have sex, sexual bullying including cyberbullying and grooming. However, it is also important to recognise that some young people who are being sexually exploited do not exhibit any external signs of this abuse. CSE is a form of child sexual abuse. CSE can affect any child who has been coerced into engaging in sexual activities. This includes 16 and 17 year olds who can legally consent to have sex. (See Keeping Children Safe in Education September 2023).

Female Genital Mutilation (FGM) Professionals in all agencies and individuals and groups in relevant communities, need to be alert to the possibility of a girl being at risk of FGM, or already having suffered FGM. There is a range of potential indicators that a child or young person may be at risk of FGM, which individually may not indicate risk but if there are two or more indicators present this could signal a risk to the child or young person. Victims of FGM are likely to come from a community that is known to practise FGM. Professionals should note that girls at risk of FGM may not yet be aware of the practice or that it may be conducted on them, so sensitivity should always be shown when approaching the subject. (See Keeping Children Safe in Education September 2023).

Child Criminal Exploitation (CCE) Some specific forms of CCE can include children being forced or manipulated into transporting drugs or money through county lines, working in cannabis factories, shoplifting or pickpocketing. They can also be forced or manipulated into committing vehicle crime or threatening / committing serious violence to others.

Children can become trapped by this type of exploitation as perpetrators can threaten victims (and their families) with violence or entrap and coerce them into debt. They may be coerced into carrying weapons such as knives or begin to carry a knife for a sense of protection from harm from others. As children involved in criminal exploitation often commit crime themselves, their vulnerability as victims is not always recognised by adults and professionals, (particularly older children), and they are not treated as victims despite the harm they have experienced. They may still have been criminally exploited even if the activity appears to be something they have agreed or consented to.

It is important to note that the experience of girls who are criminally exploited can be very different to that of boys. The indicators may not be the same, however, professionals should be aware that girls are at risk of criminal exploitation too. It is also important to note that both boys and girls being criminally exploited may be at a higher risk of sexual exploitation.

Child on Child Abuse Child on child abuse is most likely to include but not be limited to:

- bullying (including cyberbullying, prejudice - based and discriminatory bullying);
- abuse in intimate personal relationships between peers;
- physical abuse such as hitting, kicking, shaking, biting, hair pulling, or otherwise causing physical harm (this may include an online element which facilitates, threatens and / or encourages physical abuse) sexual violence, such as rape, assault by penetration and sexual assault; (this may include an online element which facilitates, threatens and / or encourages sexual violence);
- sexual harassment, such as sexual comments, remarks, jokes and online sexual harassment, which may be standalone or part of a broader pattern of abuse;
- causing someone to engage in a sexual activity without consent, such as forcing someone to

strip.

All staff should be aware that children can abuse other children (often referred to as child on child abuse). And that it can happen both inside and outside of school or college and online. It is important that all staff recognise the indicators and signs of child on child abuse and know how to identify it and respond to reports. All staff should understand that even if there are no reports in their schools or colleges it does not mean it is not happening, it may be the case that it is just not being reported. As such it is important if staff have any concerns regarding child on child abuse they should speak to their designated safeguarding lead (or deputy).

All types of Bullying including Cyberbullying and Sexting – See the Education 1st Anti-Bullying Policy.

Online Sexual Abuse The use of technology to manipulate, exploit, coerce or intimidate a child to (but not limited to): engage in sexual activity; produce sexual material/content; force a child to look at or watch sexual activities; encourage a child to behave in sexually inappropriate ways; or groom a child in preparation for sexual abuse (either online or offline). It can also involve directing others to, or coordinating, the abuse of children online. As with other forms of sexual abuse, online abuse can be misunderstood by the child and others as being consensual, occurring without the child's immediate recognition or understanding of abusive or exploitative conduct. In addition, fear of what might happen if they do not comply can also be a significant influencing factor. No child under the age of 18 can consent to being abused or exploited. Financial gain can be a feature of online child sexual abuse, it can involve serious organised crime and it can be carried out by either adults or peers.

Serious Violence All staff should be aware of the indicators, which may signal children are at risk from, or are involved with serious violent crime. These may include increased absence from Education 1st, a change in friendships or relationships with older individuals or groups, a significant decline in performance, signs of self-harm or a significant change in wellbeing, or signs of assault or unexplained injuries. Unexplained gifts or new possessions could also indicate that children have been approached by, or are involved with, individuals associated with criminal networks or gangs and may be at risk of criminal exploitation.

Gangs and Youth Violence Staff have a range of powers in relation to discipline to tackle problems, including violence, in the learning environment. Such powers cover disciplinary actions, the power to restrain violent pupils, and the power to search pupils for prohibited items.

Advice for schools and colleges is provided in the [Home Office's advice about preventing involvement in gangs and youth violence](#) and its [criminal exploitation of children and vulnerable adults: county lines guidance](#).

Drugs As part of promoting pupils' well-being, we have a role to play in preventing drug misuse as part of our pastoral responsibilities and to support the Government's drug strategy (2010) to provide information, advice and support to students via the curriculum and mentoring.

Domestic Violence, Gender Based Violence / Violence Against Women and Girls (VAWG) and Teenage Relationship Abuse involves any incident or pattern of incidents of controlling, coercive, threatening behaviour, violence or abuse between those who are, or have been in relationships or family members regardless of gender or sexuality and is applicable to teenagers engaged in abusive relationships.

Forced Marriage is not the same as an arranged marriage, as it involves coercion and force and a marriage based on free choice. It affects both males and females.

Faith Abuse [The National Action Plan to Tackle Child Abuse Linked to Faith or Belief](#) is intended to help raise awareness of the issue of child abuse linked to faith or belief and to encourage practical steps to be taken to prevent such abuse.

Radicalisation The provision is aware of its responsibilities under the Counter Terrorism and

Security Act 2015, specifically Section 26, and the [Prevent Strategy](#) to safeguard pupils who are at risk of radicalisation by identifying and risk assessing individual who may be drawn into terrorism, violent or non-violent extremism. We provide a safe environment for our pupils to explore, understand and discuss sensitive topics including terrorism and extremist ideology. We use the curriculum and pastoral support to educate our pupils and to enable them to challenge these ideas. Staff are aware of the risk posed by other students and adults who may have been radicalised and the impact of radicalisation via social media. Staff have received appropriate training and have the knowledge and confidence to identify pupils at risk of being drawn into terrorism and extremism and challenge extremist views.

Fabricated or Induced Illness This supplementary guidance Safeguarding Children in whom Illness is Fabricated or Induced (2008) sets out a national framework within which agencies and professionals at local level – individually and jointly – draw up and agree upon their own more detailed ways of working together where illness may be being fabricated or induced in a child by a carer who has parenting responsibilities for them.

Child and Adolescent Mental Health Good mental health and resilience are fundamental to our children's physical health, relationships, education and to achieving their potential.

Private Fostering is essentially arrangements made privately for the care of a child under the age of 16 (under 18, if disabled) by someone other than a parent or close relative with the intention that it should last for 28 days or more. A relative, under the Children Act 1989, is a grandparent, brother, sister, uncle or aunt (whether of the full or half blood or by marriage) or stepparent. A private foster carer may be a friend of the family, the parent of a friend of the child, or someone previously unknown to the child's family who is willing to privately foster a child. The period for which the child is cared for and accommodated by the private foster carer should be continuous, but that continuity is not broken by the occasional short break.

Education 1st has a responsibility to refer to Children's Services any private fostering arrangement. Children's Services will undertake an assessment to ensure the needs and welfare of the child or young person is being met and that adults caring for them have access to advice and support.

Attendance Education 1st monitors students' attendance through their daily register. Schools should agree with their local authority the intervals in which they will inform local authorities of the details of pupils who are regularly absent from school or have missed 10 school days or more without permission. Students that remain on the commissioning bodies roll are not necessarily missing education, but schools should monitor attendance and address it when it is poor, Education 1st will support schools with this. Education 1st also have safeguarding duties under section 175 of the Education Act 2002 in respect of their students, and as part of this should investigate any unexplained absences.

Additional information about key safeguarding areas can also be found in Keeping Children Safe in Education (2024).

Part 2: Procedures

1. Reporting Concerns

The procedure to respond to a concern about a child is detailed in Appendix B.

2. Involving Parents and Carers

Normally, the DSL will discuss any child protection concerns with parents/carers before approaching other agencies and will seek their consent to make a referral to another agency. However there may be occasions when Education 1st will contact another agency **before** informing parents/carers

because it considers that contacting them may increase the risk of significant harm to the child.

3. Multi Agency Working

Staff work in partnership with other agencies in the best interests of the children.

If there are child protection concerns, referrals should be made by the DSL (or Deputy DSL) to First Response (Bristol) by phone (0117 903 6444) or South Gloucestershire by phone (01454 866000). In less urgent cases the DSL should use the web form to contact First Response or the Access and Response team. Where the child already has a social worker, the request for service should go immediately to the social worker involved, or in their absence to their team manager.

Where Education 1st receives intelligence of a child with relation to serious youth violence, the DSL will submit a Safer Options Team intelligence form or contact one of the Safer Options Team Education Inclusion Managers directly, depending on the young person's locality. In addition, criminal intelligence will be submitted via Avon and Somerset Police online intelligence form.

We will cooperate with any child protection enquiries conducted by children's social care: Education 1st will ensure representation at appropriate inter-agency meetings such as integrated support plan meetings initial and review child protection conferences, and core group meetings.

Where a student is subject to an inter-agency child protection plan or a multi-agency risk assessment conference (MARAC) meeting, Education 1st will contribute to the preparation, implementation and review of the plan as appropriate.

In situations where a Child in Care may be put on to part time timetable, Education 1st will consult with The Hope Virtual School and Education 1st will support with any requests for information / timetable changes.

4. Exclusions

When Education 1st is considering excluding, either fixed term or permanently, a vulnerable student and / or a student who is the subject of a child protection plan or where there is an existing child protection file, we will call a multi-agency risk-assessment meeting prior to making the decision to exclude. In the event of a one-off serious incident resulting in an immediate decision to exclude, the risk assessment *must* be completed.

5. Private Fostering Arrangements

Where Education 1st has not been involved in making the arrangement but a member of staff or volunteer at a school or college becomes aware that a pupil may be in a private fostering arrangement, where a child under the age of 16 (or 18 if disabled) is provided with care and accommodation by someone to whom they are not related in that person's home, they should raise this in the first instance with the DSL. Education 1st will notify the local authority of the circumstances, via First Response. Once notified the local authority will check that the arrangement is suitable and safe for the child.

6. FGM Reporting Guidance

- **Mandatory reporting of known cases:**
- Phone 101 (999 if the child is in immediate risk of harm). It is also good practise to phone First Response to notify of this.
- **For suspected cases the following points need to be considered:**

All requests for extended leave or circumstances where a child is known to be going to a practising country of origin for the six week holidays should be reported to First Response. Other points to be aware of are as follows:

- She has a parent from a practicing community;
- She and her family have a low level of integration into a community;
- The mother or any sisters have experienced FGM;
- She is withdrawn from her peers and social group;
- She has talked about, or you know about, the arrival of a female family elder;
- She talks about it to other children;

- She refers to a 'special procedure' or 'special occasion' or 'become a woman';
- She is out of the country for a prolonged period (holidays of 6 weeks to two months or more);
- She is taking a long holiday to her country of origin or another country where the practice is prevalent (parents may talk about it too).

Prior to referring to First Response, the parents will be invited in to consider and discuss the following: **who is going, where are they going, when are they coming back, who are they going to visit, what is the purpose of the visit?**

An explicit conversation with the parent will need to take place about FGM, highlighting that the practise is illegal in this country and is classified as child abuse. This includes that the law in this country protects British nationals abroad so that it is also illegal to take the girl abroad to perform FGM. Please record the parent's response and reactions to this. Parents should also be notified that First Response will also be contacted. It is good practise to seek consent to share this information. However, if a parent refuses, then you need to notify the parent that this is your professional duty to inform First Response.

What happens next?

First Response will make a risk assessment based on the information provided, and the information they may already hold on the family. The likely outcome is that a joint visit with the police and social care will be made where a written agreement will be signed. They may also take further action if further assessment is needed.

7. Children Missing from Education

A child going missing from education is a potential indicator of abuse or neglect. Education 1st staff follow the attendance policy procedures for unauthorised absence and for dealing with children that go missing from education, particularly on repeat occasions, to help identify the risk of abuse and neglect, including sexual exploitation, and to help prevent the risks of their going missing in future.

Education 1st will inform the commissioning body of any student who fails to attend provision regularly or has been absent without permission for a continuous period of 10 school days or more.

8. Prevent (protecting children who might be at risk of radicalisation)

As with other safeguarding risks, staff should be alert to changes in children's behaviour which could indicate that they may be in need of help or protection. Staff should use their judgement in identifying children who might be at risk of radicalisation and act proportionately which may include making a referral to the Channel programme: [Prevent and Channel programmes \(bristol.gov.uk\)](https://www.bristol.gov.uk/prevent-and-channel-programmes)

Channel is a programme which focuses on providing support at an early stage to people who are identified as being vulnerable to being drawn into terrorism. It provides a mechanism for schools to make referrals if they are concerned that an individual might be vulnerable to radicalisation. An individual's engagement with the programme is entirely voluntary at all stages. To make a referral, complete the referral form and send it to the Police Prevent Team at: channelsw@avonandsomerset.pnn.police.uk

If you have concerns about someone vulnerable to radicalization, contact the Police Prevent Referral team at 01179 455 536.

9. Sharing of Information

Whilst the Data Protection Act 1998 places duties on organisations and individuals to process personal information fairly and lawfully, it is not a barrier to sharing information where the failure to do so would result in a child being placed at risk of harm. Fears about sharing information **cannot** be allowed to stand in the way of the need to promote the welfare and protect the safety of children, if unsure staff should contact the DSL to discuss.

Appendix A

Key Documentation, Procedures and Guidance

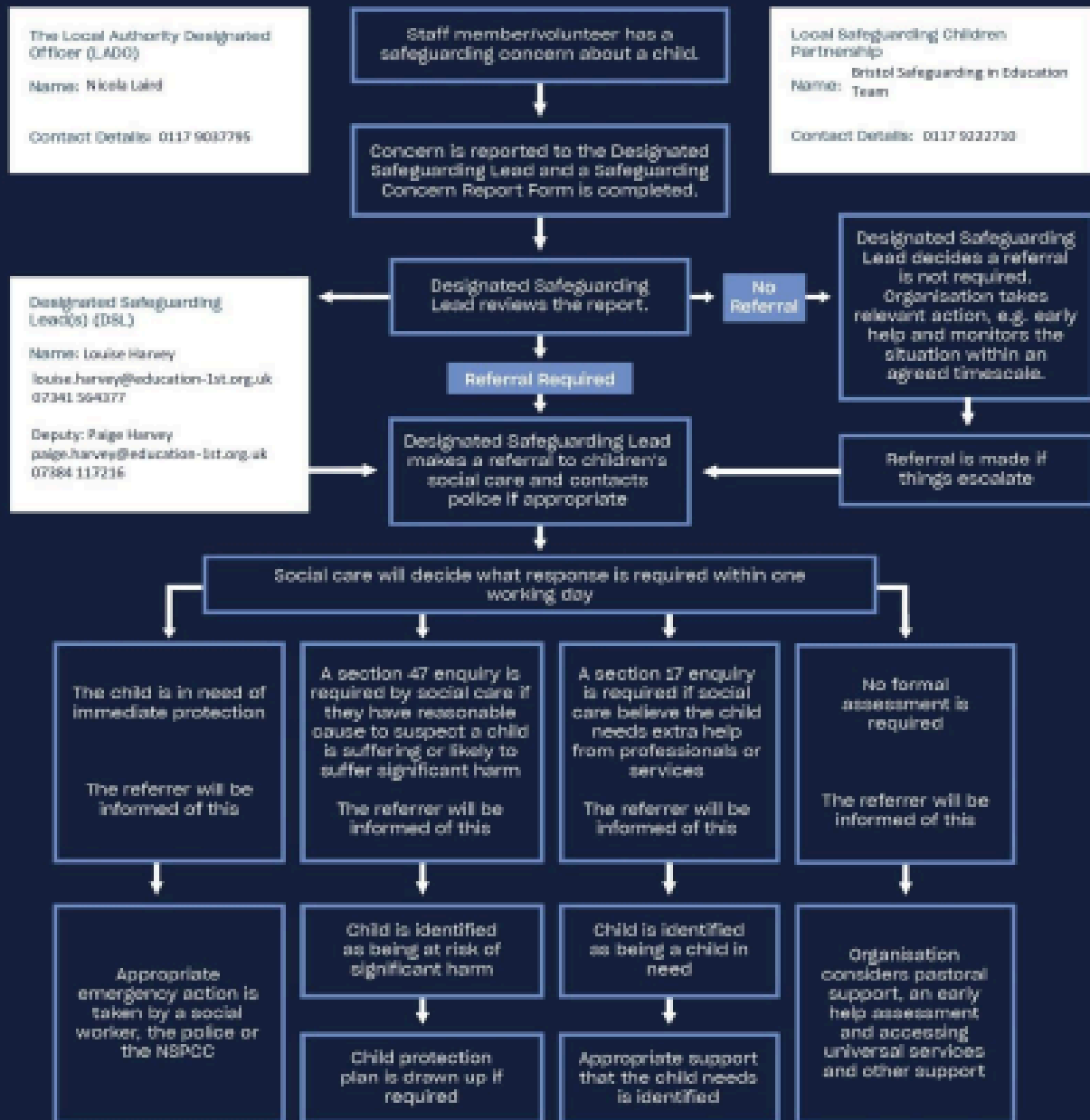
- [Keeping Children Safe in Education](#) (2024)

- [What to do if you're worried a child is being abused](#) (2015)
- [Working Together to Safeguard Children](#) (2023)
- [Designated teacher for looked after children](#) (2018)
- [Prevent Duty Guidance for England and Wales](#) (2023)
- [Information sharing: Advice for practitioners providing safeguarding services to children, young people, parents and carers](#) (2024)
- [The Teachers' Standards](#) (2021)
- [Multi-agency statutory guidance on female genital mutilation](#) (2020)
- [Mandatory Reporting of Female Genital Mutilation – procedural information](#) (2020)
- [Listening to and involving children and young people](#) (2014)
- [Alternative provision](#) (2013-16)
- [Behaviour and discipline in schools](#) (2024)
- [Children missing education](#) (2016)
- [Parental responsibility measures for behaviour & attendance](#) (2015)
- [School Exclusions](#) (2023)
- [Promoting the education of looked-after children](#) (2018)
- [Supervision of activity with children](#) (2012)
- [Disqualification under the Childcare Act 2006](#) (2018)
- [Education for children with health needs who cannot attend school](#) (2023)
- [SEND code of practice: 0 to 25 years](#) (2015-20)
- [Supporting pupils at school with medical conditions](#) (2015)

Appendix B

Reporting Concerns Flow Chart

Flowchart of Procedures for Responding To Safeguarding Concerns



All concerns and correspondence will be kept in a secure, confidential file. The child's circumstances will be kept under review at all stages and a referral will be made again if it is appropriate for improving the child's circumstances. The child's best interests must always come first.

If the concern is about a staff member/volunteer in your organisation, the DSL should refer this to the LADO who will determine the best route of action to be taken.

If your concern would involve a Prevent/Channel referral, contact:
For Children:
First Response - 0117 903 6444
For Adults:
Bristol Care Direct - 0117 932 2700

If you have a concern that a girl has undergone, or is about to undergo, FGM, contact:
First Response - 0117 903 6444
bristol.gov.uk/firstresponse

Appendix B.1 – First Response Protocol

If you have concerns about a child/young person in Bristol

If a child is at immediate risk to make an **URGENT referral**
– i.e. a child is likely to suffer or is suffering from significant harm:

Contact **FIRST RESPONSE – 0117 903 6444** if your concern relates to a disclosure of abuse requiring a same day response.

The emergency social work service phone number for nights, weekends and bank holidays is: **01454 615 165**

To make a **NON-URGENT referral**, contact **FIRST RESPONSE** using the online form
[Make a referral \(bristol.gov.uk\)](https://www.bristol.gov.uk)

If you need advice about what help can be offered to the child or their family before you make a referral to first response, you should call Families in Focus:

North: 0117 352 1499

East / Central: 0117 357 6460

South: 0117 903 7770

[Advice about making a referral to First Response \(bristol.gov.uk\)](https://www.bristol.gov.uk)

To raise concerns and ask for advice about radicalisation also contact First Response.

Prevent Duty call: 01278 647466

Email: PreventSW@avonandsomerset.police.uk

To liaise with the specialist Safeguarding Police Unit

Lighthouse Safeguarding Unit (Avon & Somerset Police) call: 01278 649228

Email: LighthouseBristol@avonandsomerset.police.uk

If you have concerns about a professional working with a child

To raise concerns and ask for guidance in relation to the conduct of someone who works with children contact the **Local Authority Designated Officer (LADO)**

Web: [LADO Concerns Professionals Bristol Referral Form \(bristolsafeguarding.org\)](https://www.bristolsafeguarding.org)

Call: 0117 903 7795

Email: LADO@bristol.gov.uk

Referral Form: [lado-referral-2024-update.docx \(live.com\)](#)

For information, advice and guidance in relation to safeguarding policy and procedures.

Bristol [Safeguarding in Education Team](#)

Web: [Safeguarding guidance and policies for education settings \(bristolsafeguardingineducation.org\)](#)

Call: 0117 9222710

Email: Safeguardingineducationteam@bristol.gov.uk

North: Sarah Wooding sarah.wooding@bristol.gov.uk M: 07785 475173

East / Central: Jess Curtis jessica.curtis@bristol.gov.uk M: 07788 363338

South: Helen Macdonald helen.macdonald@bristol.gov.uk M: 07788 363760

CSE child sexual exploitation & CCE child criminal exploitation

Operation Topaz (Avon and Somerset Police)

[Report child sexual exploitation | Avon and Somerset Police](#)

[Give us information about a suspected vulnerable or exploited person | Avon and Somerset Police](#)

Safer Options Team - Education Inclusion Managers

Gangs, Youth Violence, Knife Crime

North: Ingrid Hooper Ingrid.Hooper@bristol.gov.uk M: 07781 718251

East / Central: Calum Paton Calum.Paton@bristol.gov.uk M: 07780 069820

South: Ross Moody Ross.Moody@bristol.gov.uk M: 07780 069890

Bristol City Council – Education Welfare

Children Missing from Education

[Children missing education \(CME\) \(bristol.gov.uk\)](#)

Forced Marriage Unit

Children affected by Forced Marriage

T: (0) 20 7008 0151

E: fmf@fco.gov.uk

FGM advice

NSPCC FGM Helpline

T: 0800 028 3550

E: fgmhelp@nspcc.org.uk

Domestic Abuse support (Bristol)

Directorate of local and national services

<https://www.bristol.gov.uk/crime-emergencies/abuse-violence>

Online Safety Advice

Professional Online Safeguarding Helpline

T: 0344 381 4772

E: helpline@saferinternet.org.uk

Reporting Online Abuse and Grooming

Child Exploitation and Online Protection Command

Web: <https://www.ceop.police.uk/ceop-reporting/>

Young Carers – Advice and Support

Carers Support Centre

T: 0117 958 9980

W: <https://www.carerssupportcentre.org.uk/young-carers/contact-young-carers/>

Whistleblowing Professional Policy

NSPCC Whistleblowing hotline

T: 0800 028 0285

E: help@nspcc.org.uk

Mental Health Advice (Local)

Primary Mental Health Specialists (advice) Child and Adolescent Mental Health

Community Children's Health Partnership

Unit 9, Eastgate Office Centre Eastgate Road, Eastville BS5 6XX

T: 0117 340 8063

Web: [Bristol CAMHS \(stayalive.app\)](https://bristol.camhs.stayalive.app)

South: 0117 3408121

East/Central: 0117 3408600

North: 0117 3546800

BeSafe:

Advice around harmful sexualised behaviour. BeSafe is a small multi-disciplinary team that works with children and young people who have engaged in problematic (PSB) or harmful sexual behaviour (HSB), their parents/carers and those supporting them.

Info: [BE SAFE Information leaflet.pdf \(awp.nhs.uk\)](#)

T: 0117 3408700 - 0117 3408600

E: awp.besafe@nhs.net

Brook Traffic Light Tool

[CPD: Brook Sexual Behaviours Traffic Light Tool \(RSE\) Course](#)

Appendix C

Dealing with a Disclosure of Abuse

When a child tells me about abuse s/he has suffered, what must I remember?

- Stay calm.
- Do not communicate shock, anger or embarrassment.
- Reassure the child. Tell her/him you are pleased that s/he is speaking to you.
- Never promise confidentiality. Assure her/him that you will try to help but let the child know that you may have to tell other people in order to do this. State who this will be and why.
- Encourage the child to talk but do not ask "leading questions" or press for information.
- Listen and remember.
- Check that you have understood correctly what the child is trying to tell you.
- Praise the child for telling you. Communicate that s/he has a right to be safe and protected.
- It is inappropriate to make any comments about the alleged offender.
- Be aware that the child may retract what s/he has told you. It is essential to record all you have heard.
- At the end of the conversation, tell the child again who you are going to tell and why that person or those people need to know.
- As soon as you can afterwards, make a detailed record of the conversation using the child's own language. Include any questions you may have asked. Do not add any opinions or interpretations.

NB It is not the education staff's role to seek disclosures. Their role is to observe something may be wrong, ask about it, listen, be available and try to make time to talk.

Appendix D

Types of Abuse and Neglect (KCSIE 2024 also includes Exploitation)

Abuse and neglect is defined as the maltreatment of a child or young person whereby someone may abuse or neglect a child by inflicting harm, or by failing to prevent harm. They may be abused by an adult or adults or by another child or children.

All staff should be aware that abuse, neglect and safeguarding issues are rarely standalone events that can be covered by one definition or label. In most cases multiple issues will overlap with one another.

The following are the definition of abuse and neglect as set out in Working Together to Safeguard Children (2023) however, the ultimate responsibility to assess and define the type of abuse a child or young person may be subject to is that of the Police and Children's Services – our responsibility is to understand what each category of abuse is and how this can impact on the welfare and development of our children and where we have concerns that a child or young person may be at risk of abuse and neglect (one or more categories can apply) to take appropriate action as early as possible.

Physical abuse: a form of abuse which may involve hitting, shaking, throwing, poisoning, burning or scalding, drowning, suffocating or otherwise causing physical harm to a child. Physical harm may also be caused when a parent or carer fabricates the symptoms of, or deliberately induces, illness in a child.

Neglect: the persistent failure to meet a child's basic physical and/or psychological needs, likely to result in the serious impairment of the child's health or development. Neglect may occur during pregnancy as a result of maternal substance abuse. Once a child is born, neglect may involve a parent or carer failing to: provide adequate food, clothing and shelter (including exclusion from home or abandonment); protect a child from physical and emotional harm or danger; ensure adequate supervision (including the use of inadequate caregivers); or ensure access to appropriate medical care or treatment. It may also include neglect of, or unresponsiveness to, a child's basic emotional needs.

Sexual abuse: involves forcing or enticing a child or young person to take part in sexual activities, not necessarily involving a high level of violence, whether or not the child is aware of what is happening. The activities may involve physical contact, including assault by penetration (for example rape or oral sex) or non-penetrative acts such as masturbation, kissing, rubbing and touching outside of clothing. They may also include non-contact activities, such as involving children in looking at, or in the production of, sexual images, watching sexual activities, encouraging children to behave in sexually inappropriate ways, or grooming a child in preparation for abuse (including via the internet). Sexual abuse is not solely perpetrated by adult males. Women can also commit acts of sexual abuse, as can other children.

Emotional abuse: the persistent emotional maltreatment of a child such as to cause severe and adverse effects on the child's emotional development. It may involve conveying to a child that they are worthless or unloved, inadequate, or valued only insofar as they meet the needs of another person. It may include not giving the child opportunities to express their views, deliberately silencing them or 'making fun' of what they say or how they communicate. It may feature age or developmentally inappropriate expectations being imposed on children. These may include interactions that are beyond a child's developmental capability as well as overprotection and limitation of exploration and learning or preventing the child participating in normal social interaction. It may involve seeing or hearing the ill treatment of another. It may involve serious bullying (including cyberbullying), causing children frequently to feel frightened or in danger, or the exploitation or corruption of children. Some level of emotional abuse is involved in all types of maltreatment of a child, although it may occur alone.